

GP 2630  
ACCESSORIES



Insulating perimeter strip, in closed-cell expanded polyethylene (density 23 kg/m<sup>3</sup>), with adhesive surface for fixing to a wall and moveable polyethylene strip on the panel side.  
Suitable for separating floors from vertical structures of buildings.

CODE	Height	Thickness	Pack m
9920P561	150 mm	7 mm	60

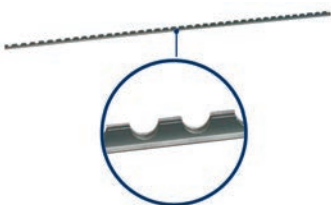
GP 2630  
ACCESSORIES



Insulating perimeter strip, in closed-cell expanded polyethylene (density 23 kg/m<sup>3</sup>), with adhesive surface for fixing to a wall, without moveable polyethylene strip.  
Suitable for separating floors from vertical structures of buildings.

CODE	Height	Thickness	Pack m
9920P562	100 mm	5 mm	50

GP 2630  
ACCESSORIES



Plastic expansion joint profile with adhesive base and seat for 7-8 mm thick insulating strip.

CODE	Size	Pack m
9925P010	WxHxD 2000x35x20 mm	10
28130032	WxHxD 2000x35x20 mm	50

**NEW**

GP 2630  
ACCESSORIES



Super-fluidifying additive for screeds.

Reduces the mixing water considerably, significantly increases the mechanical strength of the concrete increasing its thermal conductivity.

Improves workability and reduces porosity and hygrometric shrinkage.

Dosage: 1 ÷ 1.5 kg per 100 kg of concrete.

Article compatible with code 9918X511.

CODE	kg/Pack
28130414	10

GP 2630  
ACCESSORIES



Super-fluidifying additive for screeds.  
Reduces the mixing water considerably, significantly increasing the mechanical strength of the concrete and increasing its thermal conductivity.  
Dosage: 0.7 ÷ 1.2 litres per 100 kg of concrete.

Article compatible with code 28130414.  
Article available while stocks last.

**CODE** **I/Pack**

**9918X511** 10

GP 2630  
ACCESSORIES



Protective for heating high or low temperature systems/air conditioning systems.  
Anti-corrosive protective for all metals (steel-copper-aluminium), antiscaling and biocide for heating systems high or low temperature and/or air conditioning systems, with antiscaling protectors (max 25 °F)

**TECHNICAL DATA**

Appearance: light yellow liquid - straw-coloured - pH: 7±0,5 - Density (20 °C): 1.025±0.01 kg/l  
Dispensing 5% (5 kg every 100 liter of water)

**CODE** **Kg/Pack**

**02706396** 5

**NEW**

GP 2630  
ACCESSORIES



Polymer fibers for screeds.

Structural polymer fibers with a length of 30 mm designed to improve the tensile strength characteristics of concrete in the post-cracking phase.  
They reinforce "moist soil" type concrete, increasing its ductility and toughness.  
Suitable for making heated screeds.  
Suggested dose: 1÷3 kg/m<sup>3</sup>.

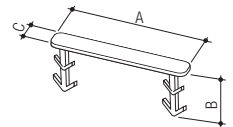
**CODE** **Pack** **Pack pcs/box**

**28130418** 1,0 kg bag 1

GP 2630  
ACCESSORIES



Straddle clip in plastic material. It is applied on the panel ashlars to hold the pipes in the critical points.  
Not suitable for panels with hard thermoformed film.



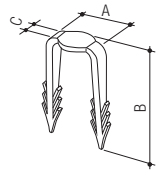
**CODE** **A mm** **B mm** **C mm** **Pack pcs/box**

**28134452** 88 28 14 100

GP 2630  
ACCESSORIES

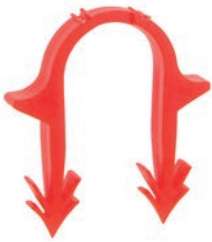


Manual pipe-holder clip, made of plastic, to further secure the pipes at critical points.

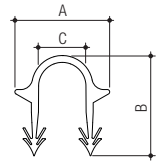


CODE	A mm	B mm	C mm	Pack pcs/box
28134456	25	49	5	100

GP 2630  
ACCESSORIES



Pipe holding clip for Tacker made with plastic material to secure  $\varnothing$  16-20 mm pipes, suitable for the Roll-Plan smooth panel.



CODE	Size	A mm	B mm	C mm	Pack pcs/box
28134454	$\varnothing$ 16 $\div$ 20 mm	39	42	20	300

GP 2630  
ACCESSORIES



Clip holding Tacker, allows to easily secure pipes to the Roll-Plan smooth panel sitting upright.

CODE	Pack pcs/box
9926X001	1

GP 2630  
ACCESSORIES



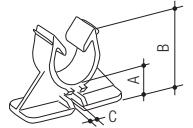
Support curves for pipes with diameter from 16 to 17 mm. In PA66, reinforced with fibreglass. They support the pipes at the base of the manifolds.

CODE	Size	Pack pcs/box
28134450	$\varnothing$ 16 $\div$ 17 mm	10

GP 2630  
ACCESSORIES



Pipe-holding clip for metal mesh, for  $\varnothing$  16-17 mm pipes, to be used with metal mesh,  $\varnothing$  3 mm wire.



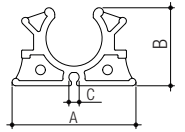
Article available while stocks last.

CODE	A mm	B mm	C mm	Pack pcs/box
9929P000	13	36	4,2	200

GP 2630  
ACCESSORIES



Pipe-holding clip for metal mesh, for  $\varnothing$  16-17 mm pipes, to be used with metal mesh,  $\varnothing$  3 mm wire.



It will be supplied when stocks run out of the code 9929P000.

CODE	Size	A mm	B mm	C mm	Pack pcs/box
28134458	$\varnothing$ 16 ÷17 mm	35	22	$\varnothing$ 3	1000

Medium consumption: 35 pcs/m<sup>2</sup>

GP 2630  
ACCESSORIES



Mesh clip-holding tool, to be used with clips code 28134458.

CODE	Pack pcs/box
28134462	1

GP 2630  
ACCESSORIES



Non-woven felt for FIVPav system.  
Made of polypropylene staple. Thickness 4 mm. Density: 500 g/m<sup>2</sup>.

CODE	Size	Pack m <sup>2</sup>
6320R002	2 x 25 m	50

GP 2630  
ACCESSORIES



Roofing sheet in regenerated polyethylene with grid (in roll).

CODE	Size	Thickness	Pack m <sup>2</sup>
<b>28141020</b>	2 x 50 m	0,2 mm	100

Single-fold sheet 2 x 1 m wide, 50 m roll, in regenerated amber colored polyethylene with 100 mm pitch grid, sheet thickness 0.2 mm.  
Made with 100% recycled polyethylene.  $S_d$  (vapor transmission):  $\geq 100$  m.

GP 2630  
ACCESSORIES



Completely disassembled roll dispenser, for rolls from 38 cm to max 100 cm,  
max height 60 cm (maximum roll weight: 80 Kg).

CODE	Pack pcs/box
<b>9919X001</b>	1